

Tapping tee

www.star.de.com



109 11092
125x32mm-PE100
HEAT 80 SEC
COOL 10 MIN

Tapping Tee

for house connections and distribution lines



Security – LockCap
Tamper-proof Lockcap which ensures correct installation – it cannot be over-tightened – and won't vibrate loose.



Safety – O-ring Seals
Two O-ring seals protect against leakage, and deliver quality live connections.



4 mm pin



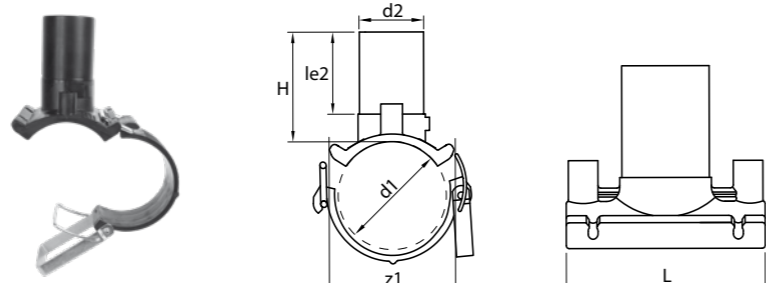
Double Spigot Outlet
The outlet spigot on tapping tees gives the installer a 'second chance' – if problems occur with the initial service connection (Fig 1) there is sufficient spigot length to cut off the coupler and fuse a second fitting (Fig 2).



Double Spigot Outlet
The toggle-clamp design snaps quickly in place, saves the installer time, avoids the need for specialist tooling, and provides proof of clamping during the fusion cycle.

20 – 63 mm outlet

4 mm Pin
to be processed with standard 12 mm tapping hexagon
Pressure ratings:
water 16 bar / gas 10 bar



PE 100

Tapping Tee

for house connections and distribution lines



Art.-No	d1 [mm]	d2 [mm]	L [mm]	z2 [mm]	H [mm]	h2 [mm]	VE	kg
47004012	40	20	120	105	110	50	10	0,38
47004022	40	25	120	105	110	50	10	0,38
47004032	40	32	120	105	110	50	10	0,38
47005012	50	20	120	105	110	50	10	0,40
47005022	50	25	120	105	110	50	10	0,40
47005032	50	32	120	105	110	50	10	0,40
47006012	63	20	120	105	119	62	10	0,53
47006022	63	25	120	105	119	62	10	0,53
47006032	63	32	120	105	119	62	10	0,53
47006042	63	40	146	165	155	59,5	5	0,95
47006052	63	50	146	165	155	59,5	5	0,95
47006062	63	63	146	165	155	59,5	5	1,01
47007012	75	20	120	105	110	77	10	0,67
47007022	75	25	120	105	110	77	10	0,67
47007032	75	32	120	105	110	77	10	0,67
47007042	75	40	146	165	152	57	5	1,10
47007052	75	50	146	165	152	57	5	1,10
47007062	75	63	146	165	152	57	5	1,15
47009012	90	20	120	105	110	77	10	0,61
47009022	90	25	120	105	110	77	10	0,61
47009032	90	32	120	105	110	77	10	0,61
47009042	90	40	146	165	152	57	5	1,06
47009052	90	50	146	165	152	57	5	1,10
47009062	90	63	146	165	152	57	5	1,12
47011012	110	20	120	105	117	87	10	0,65
47011022	110	25	120	105	117	87	10	0,65
47011032	110	32	120	105	117	87	10	0,65
47011042	110	40	146	165	176	105	5	1,09
47011052	110	50	146	165	176	105	5	1,10
47011062	110	63	146	165	176	105	5	1,15
47012012	125	20	120	105	117	95	10	0,66
47012022	125	25	120	105	117	95	10	0,66
47012032	125	32	120	105	117	95	10	0,67
47012042	125	40	146	165	178	112	5	1,10
47012052	125	50	146	165	178	112	5	1,15
47012062	125	63	146	165	178	112	5	1,20
47016012	160	20	120	105	122	112	10	0,73
47016022	160	25	120	105	122	112	10	0,73
47016032	160	32	120	105	122	112	10	0,73
47016042	160	40	146	165	182	137	5	1,13
47016052	160	50	146	165	182	137	5	1,14
47016062	160	63	146	165	182	137	5	1,19
47018012	180	20	120	105	122	122	10	0,75
47018022	180	25	120	105	122	122	10	0,75
47018032	180	32	120	105	122	122	10	0,75
47018042	180	40	146	165	183	147	5	1,15
47018052	180	50	146	165	183	147	5	1,17
47018062	180	63	146	165	183	147	5	1,22
47020012	200	20	120	105	122	132	10	0,73
47020022	200	25	120	105	122	132	10	0,73
47020032	200	32	120	105	122	132	10	0,73
47020042	200	40	146	165	183	157	5	1,15
47020052	200	50	146	165	183	157	5	1,17
47020062	200	63	146	165	183	157	5	1,21
47022012	225	20	120	105	122	145	10	0,78
47022022	225	25	120	105	122	145	10	0,78
47022032	225	32	120	105	122	145	10	0,78
47022042	225	40	146	165	183	169	5	1,15
47022052	225	50	146	165	183	169	5	1,17
47022062	225	63	146	165	183	169	5	1,22

Tapping Tees for 63 mm mains only are not suitable for SDR 17 pressurised pipe applications

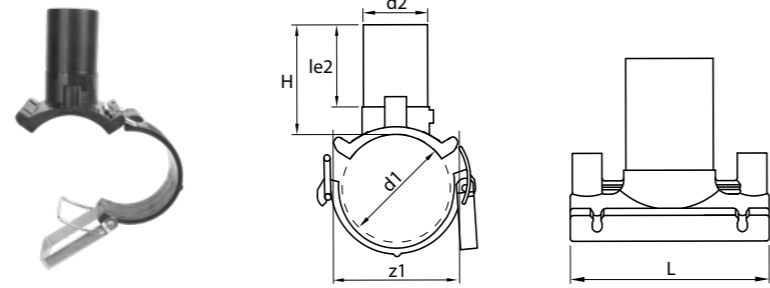
Branch Saddle

for distribution lines



40 - 63 mm outlet

4 mm Pin
with reinforced lower part
Pressure ratings:
water 16 bar / gas 10 bar



PE 100



Art.-No	d1 [mm]	d2 [mm]	L [mm]	le2 [mm]	z1 [mm]	H [mm]	kg	VE
47206042	63	40	147	75	119	115	0,48	10
47206052	63	50	147	75	119	115	0,48	10
47206062	63	63	147	75	119	115	0,50	10
47207042	75	40	147	75	119	115	0,63	10
47207052	75	50	147	75	119	115	0,63	10
47207062	75	63	147	75	119	115	0,65	10
47209042	90	40	147	75	122	115	0,61	10
47209052	90	50	147	75	122	115	0,61	10
47209062	90	63	147	75	122	115	0,63	10
47211042	110	40	147	75	122	118	0,62	10
47211052	110	50	147	75	122	118	0,63	10
47211062	110	63	147	75	122	118	0,64	10
47212042	125	40	147	75	122	118	0,62	10
47212052	125	50	147	75	122	118	0,63	10
47212062	125	63	147	75	122	118	0,64	10
47216042	160	40	147	75	122	125	0,65	10
47216052	160	50	147	75	122	125	0,66	10
47216062	160	63	147	75	122	125	0,68	10
47218042	180	40	147	75	122	125	0,68	10
47218052	180	50	147	75	122	125	0,69	10
47218062	180	63	147	75	122	125	0,70	10
47220042	200	40	147	75	122	125	0,68	10
47220052	200	50	147	75	122	125	0,69	10
47220062	200	63	147	75	122	125	0,70	10
47222042	225	40	147	75	122	125	0,72	10
47222052	225	50	147	75	122	125	0,73	10
47222062	225	63	147	75	122	125	0,75	10

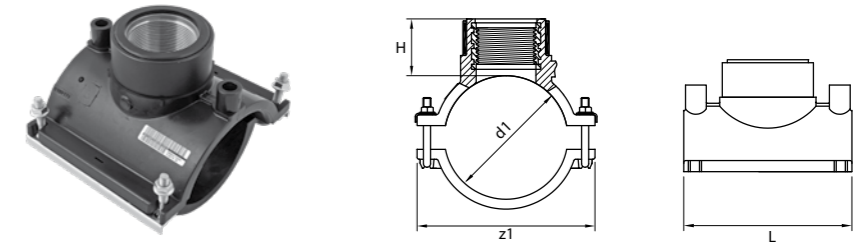
Transition Saddle

for connection of irrigation systems



1 1/2" - 2" outlet with female thread

4 mm Pin
Pressure ratings:
water 16 bar / gas 10 bar



PE 100

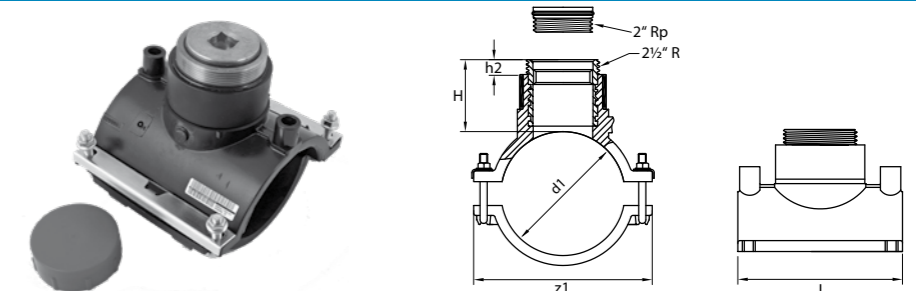


Art No	d1 [mm]	Rp [mm]	L [mm]	z1 [mm]	H [mm]	VE	Kg
47606142	63	1 1/4"	118	102	90	10	1,00
47609142	90	1 1/4"	167	156	57	4	1,64
47609122	90	1 1/2"	167	156	57	4	1,60
47609202	90	2"	167	156	57	4	1,38
47611142	110	1 1/4"	166	180	56	2	2,44
47611122	110	1 1/2"	166	180	56	2	2,40
47611202	110	2"	166	180	56	2	2,18
47612142	125	1 1/4"	166	180	58	2	2,38
47612122	125	1 1/2"	166	180	58	2	2,34
47612202	125	2"	166	180	58	2	2,12
47616142	160	1 1/4"	215	236	84	2	2,83
47616122	160	1 1/2"	215	236	84	2	2,79
47616202	160	2"	215	236	84	2	2,57
47618142	180	1 1/4"	215	236	74	2	3,06
47618122	180	1 1/2"	215	236	74	2	3,03
47618202	180	2"	215	236	74	2	2,80
47620202	200	2"	166	263	82	3	2,17
47622202	225	2"	166	300	80	2	2,30
47625202	250	2"	166	317	86	2	2,42

Balloon Saddle

2 1/2" Abgang mit Außengewinde

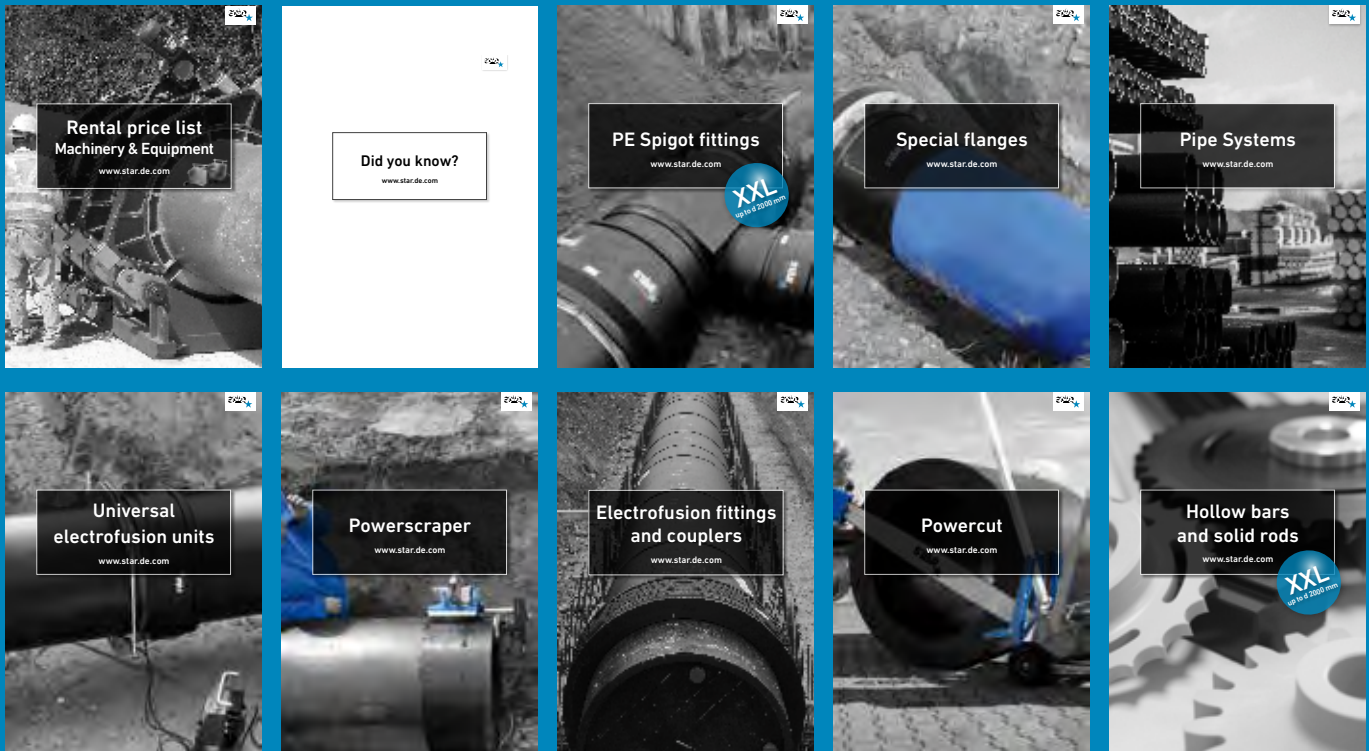
4 mm Pin
Supplied as a kit consisting of:
Balloon Saddle, plug and cap
Pressure ratings:
water PN 16 / gas 10 bar



PE 100



Art No	d1 [mm]	R [mm]	L [mm]	z1 [mm]	H [mm]	h2	VE	Kg
47709222	90	2 1/2"	167	154	71	15	4	2,05
47711222	110	2 1/2"	166	180	72	15	2	2,35
47712222	125	2 1/2"	166	180	72,5	15	2	2,29
47716222	160	2 1/2"	215	236	84	15	2	3,21
47718222	180	2 1/2"	215	236	74	15	2	2,98
47720222	200	2 1/2"	166	263	82	15	3	3,35
47722222	225	2 1/2"	166	300	80	15	2	3,50
47725222	250	2 1/2"	166	317	86	15	2	3,77



We provide you with high-quality and efficient solutions for applications in supply and disposal.

In addition to our high-quality standard and special fittings, seamless bends, electrofusion fittings, pipes and hollow bars and solid rods, we also offer suitable welding equipment for joining and welding technique.

Our extensive product range gives you the possibility to obtain every-thing from a single source and for almost every building project.

See for yourself.

STAR Piping Systems GmbH

Am Schornacker 90, 46485 Wesel
Deutschland

Tel.: + 49 (0) 2 81 - 9 84 14 - 0

Fax: + 49 (0) 2 81 - 9 84 14 - 44

www.star.de.com